

MONTHLY MEMBERSHIP PROGRESS REPORT

LOCATION PENNSYLVANIA

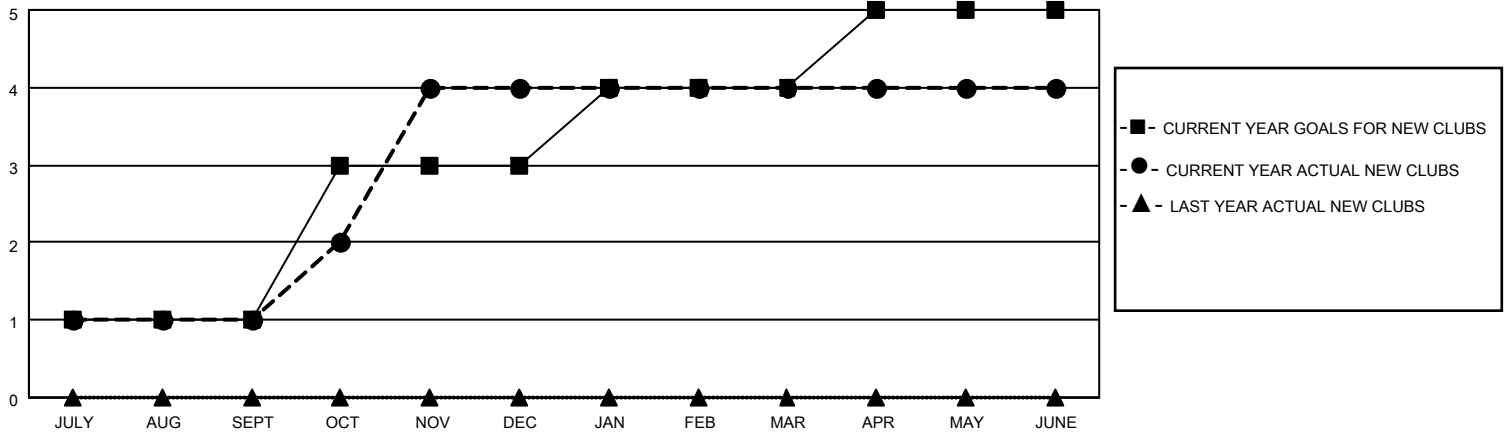
District 14 A

Results as of: 6/30/2021

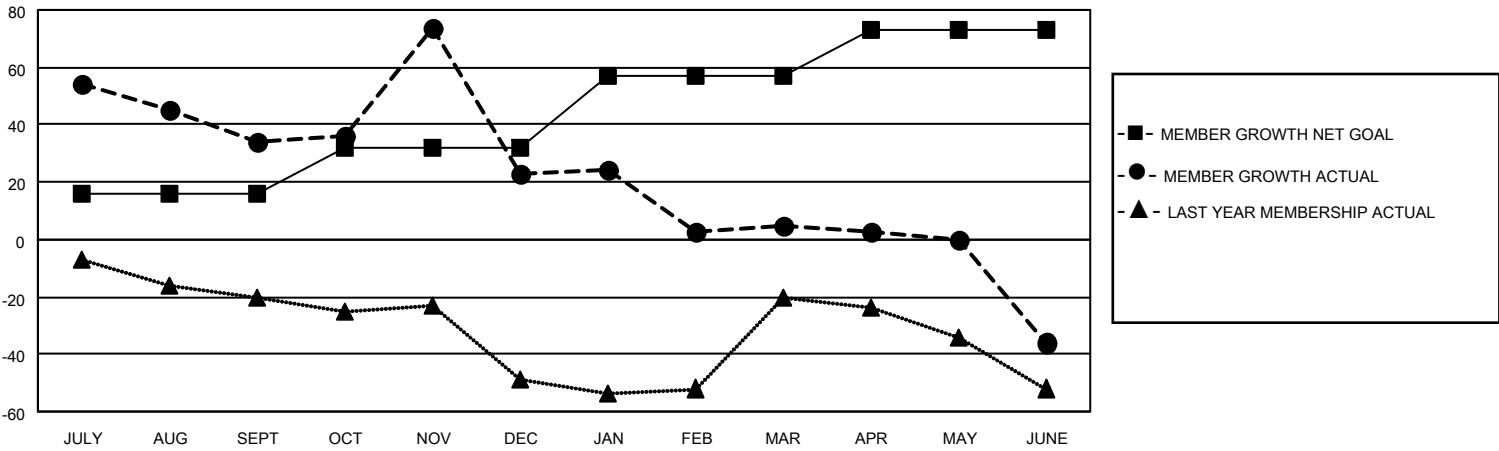
Clubs			
RESULTS FOR 2020-2021			
QUARTER	NEW CLUB GOAL	NEW CLUBS	DROPPED CLUBS
JULY/AUG/SEPT	1	1	0
OCT/NOV/DEC	2	3	0
JAN/FEB/MAR	1	0	1
APR/MAY/JUNE	1	0	1

Members			
RESULTS FOR 2020-2021			
QUARTER	MEMBER GROWTH NET GOAL	MEMBER GROWTH ACTUAL	DROPPED MEMBERS ACTUAL (including transfers)
JULY/AUG/SEPT	16	77	39
OCT/NOV/DEC	16	84	92
JAN/FEB/MAR	25	22	38
APR/MAY/JUNE	16	18	51

GOALS AND ACTUAL NEW CLUBS CUMULATIVE



GOALS AND ACTUAL MEMBERS CUMULATIVE



DROPPED CLUBS: 2	21 CLUBS OF 65 ADDED 1 OR MORE NEW MEMBERS	<u>GENDER DISTRIBUTION</u>
<u>DROPPED MEMBERS</u>	CLICK HERE FOR CUMULATIVE MEMBERSHIP DATA	MALE 962 (66.39%)
DECEASED 28		FEMALE 487 (33.61%)
CLUB CANCELLED 35		TOTAL FAMILY UNIT MEMBERS 232
OTHER 157		FAMILY MEMBERS PAYING HALF DUES 121
TOTAL 220		